

# PRACTICODE SOLUTIONS

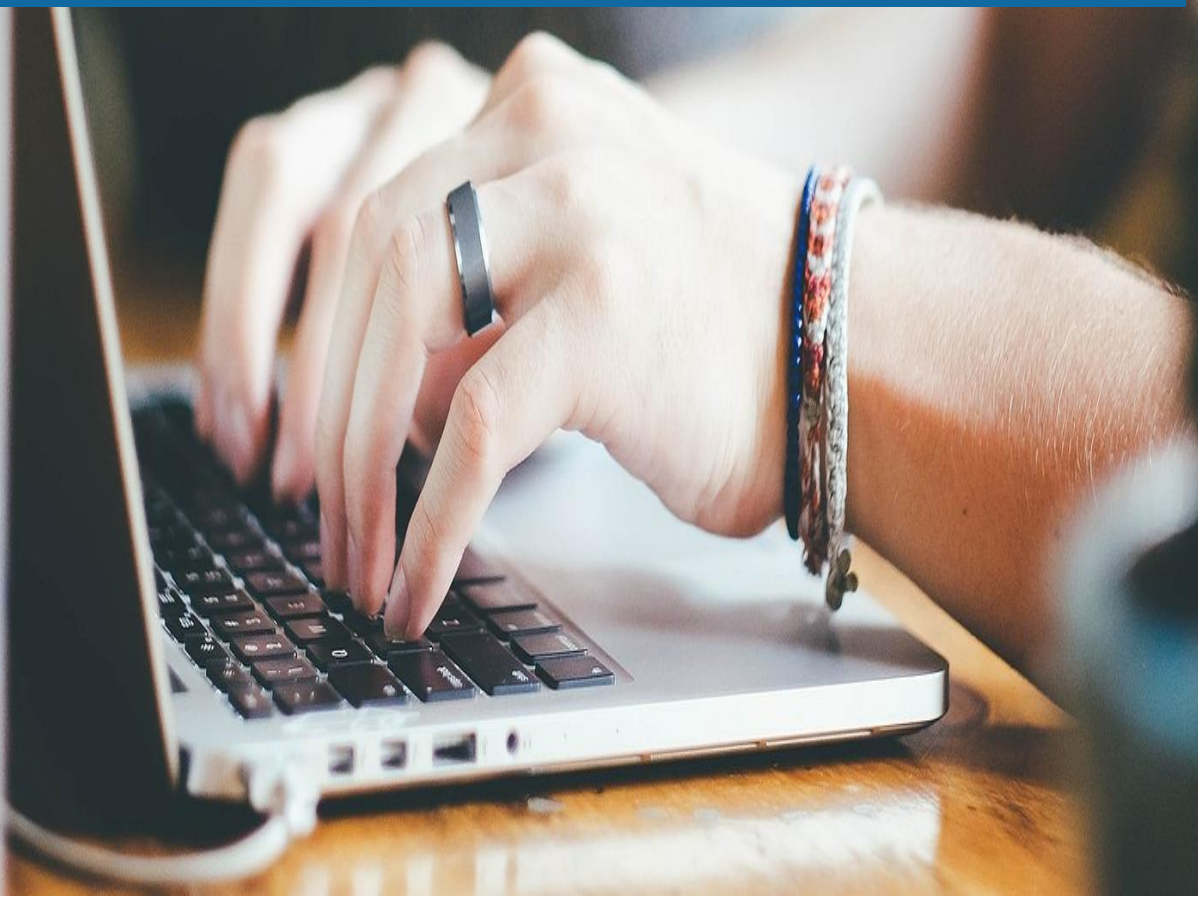
---

Online internship and  
assessment packages

**AAPC**

2233 S Presidents Dr., Suite F  
Salt Lake City, UT 84120

**practicode**  
by AAPC



## Table of Contents

Practicode Overview .....	3
Practicum Overview .....	5
Specialty Assessments .....	8
Employer Assessments .....	13

### Why Practicode?

Practicode offers improved quality, standardization, and convenience for continuing education and assessment, all while providing the benefits of gained experience and demonstration of proficiency.

Healthcare employers can ensure that their prospective candidates have well-earned experience when they have completed 600 cases with AAPC's Practicode Practicum programs, that cover a wide-range of clinical cases spanning evaluation and management services to various surgical procedures. Utilizing standardized pre-employment testing is a great way to identify qualified candidates and overcome hiring challenges, AAPC's Practicode Employer Assessments handle the task for you with a variety of employer assessments available and our team of professionals to assist you every step of the way.

# Practicode Overview

Practicode is an online competency assessment tool designed to teach and test medical coding proficiency using real, redacted medical records concentrated on the top hiring medical specialties. Practicode allows a learner to quickly learn and apply new skills and gain experience that can be applied to a new job or for career advancement. Practicode helps coders with every level of experience, from a new professional to a tenured veteran.

This training program is designed to allow the learner to apply their existing coding knowledge while learning new medical coding concepts through general and specialty focused redacted medical cases. The learner will apply coding utilizing ICD-10-CM, CPT®, HCPCS Level II, and modifier coding assignments based on general coding guidelines and CMS regulations (NCD/LCD and NCCI). Learners are also tested on their RVU sequencing and unit reporting.

## FEATURES

**Web-Based:** Practicode is web-based, allowing learners to access and work on Practicode anywhere and at any time 24/7 with internet access.

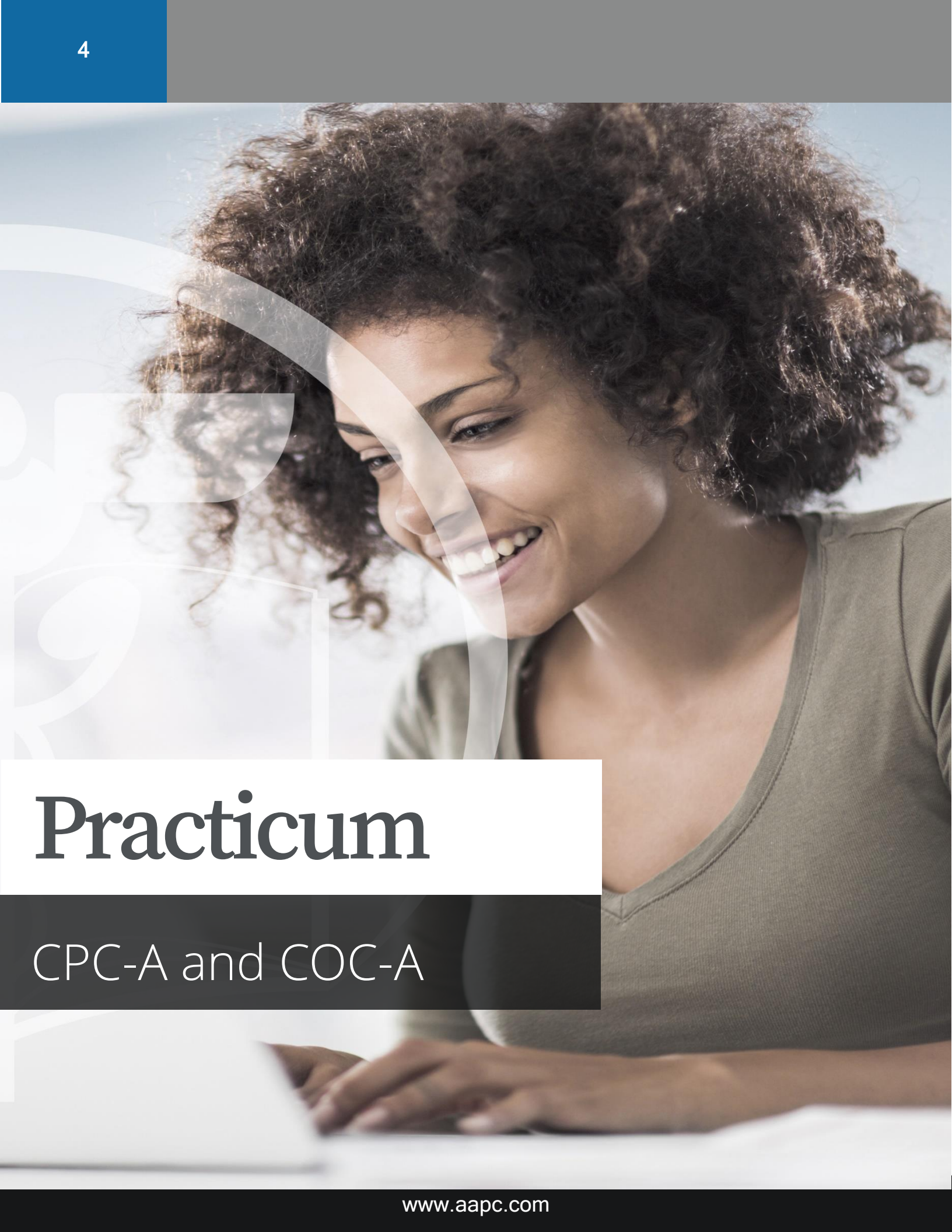
**Real World Cases:** Practicode includes actual charts and medical documentation to provide the best simulated experience for cases that coders see while on the job.

**Multiple Specialties:** Each module and assessment contain cases ranging across a broad selection of the most common specialties.

**Technology Based:** Results and feedback are given instantly so learners can know how well they are doing and what they need to improve. They can also review their answers and rationale if they have access to the course.

**User Friendly:** Practicode is easy to learn with a clean and intuitive interface. Learners can begin coding in no time getting the experience they need rather than wasting time





# Practicum

CPC-A and COC-A

# Practicum Overview

Practicode Practicums are currently offered for two of AAPC's credentials, CPC-A (professional fee coders) and COC-A (outpatient facility coders).

The Practicode program is designed to provide coders with the equivalent of one (1) year of experience. When used in combination with AAPC's CPC or COC credential training program the newly credentialed coder can have their apprentice designation removed.

Practicode is comprised of three modules, each module contains 200 real redacted medical records. A 20-case assessment created using cases from the 200-case module, learners must successfully complete the assessment with a proficiency of 70% or higher.

At the end of the program the student will have completed 600 real medical cases, this training includes the following specialty specific cases.

*CPC-A Practicum – Each case can contain more than one category.*

<i>Category</i>	<i>Number of Cases</i>
<b><i>Evaluation and Management</i></b>	270
<b><i>Digestive System</i></b>	74
<b><i>Cardiovascular &amp; Thoracic</i></b>	25
<b><i>Integumentary</i></b>	25
<b><i>Eye/Ocular</i></b>	6
<b><i>Auditory</i></b>	4
<b><i>Female Genital System/Maternity</i></b>	10
<b><i>Hemic/Lymph</i></b>	5
<b><i>Medicine</i></b>	109
<b><i>Musculoskeletal System</i></b>	108
<b><i>Nervous System</i></b>	25
<b><i>Radiology</i></b>	33
<b><i>Endocrine</i></b>	1
<b><i>Respiratory</i></b>	8
<b><i>Urinary</i></b>	2
<b><i>HCPCS</i></b>	6

COC-A Practicum – Each case can contain more than one category. *(This content is pending update)*

<i>Category</i>	<i>Number of Cases</i>
<b><i>Evaluation and Management</i></b>	270
<b><i>Digestive System</i></b>	74
<b><i>Cardiovascular &amp; Thoracic</i></b>	25
<b><i>Integumentary</i></b>	25
<b><i>Eye/Ocular</i></b>	6
<b><i>Auditory</i></b>	4
<b><i>Female Genital System/Maternity</i></b>	10
<b><i>Hemic/Lymph</i></b>	5
<b><i>Medicine</i></b>	109
<b><i>Musculoskeletal System</i></b>	108
<b><i>Nervous System</i></b>	25
<b><i>Radiology</i></b>	33
<b><i>Endocrine</i></b>	1
<b><i>Respiratory</i></b>	8
<b><i>Urinary</i></b>	2
<b><i>HCPCS</i></b>	6





**Specialty**

**Assessments**

# Specialty Practicode Modules

Successful medical coders know the key to creating and advancing their own career paths requires seeking opportunities to develop new skills. Coders who want to move into another specialty or take on a client contract can show their expertise in the field based on their exposure to the nuances of the specialty using Practicode.

## DETAILS

- Each assessment includes 20 cases
- Gain experience faster than an on-the-clock job
- Code from real medical records, redacted for HIPAA compliance
- Receive immediate rationale explaining correct code assignment
- Get the confidence needed to impress in your next job interview
- [Earn 3 CEUs for each specialty completed](#)

AAPC has the following specialties available:

### Behavioral Health

Cases include services covered in the Psychiatric portion of the Medicine section & E/M services	Psychiatric Diagnostic Evaluation
	Psychiatric Diagnostic Evaluation with Medical Services
	Evaluation and Management Services
	Psychotherapy Services with Increased Complexity
	Psychotherapy

### Cardiology

Cases include services covered in the cardiovascular section of the CPT code book	Pacemaker services (insertions, revisions, and removals)
	Ligation Procedures on Arteries and Veins
	Vascular Introduction and Injection Procedures
	Bypass Graft Procedures
	Transcatheter Procedures
	Cardiovascular Monitoring Services
	Echocardiography Procedures
	Evaluation and Management Services



## Dermatology

Cases include services covered in the integumentary, male genital, medicine, and venous procedures sections of the CPT code book along with E/M and HCPCS services	Biopsy Procedures on the Skin
	Repair Procedures on the Integumentary System
	Excisions-Benign-Malignant Lesions on the Skin
	Mohs Micrographic Surgery Procedures
	Surgical Procedures on the Lips
	Evaluation and Management Services

## Evaluation and Management

Cases include services covered in the evaluation & management section of the CPT code book	Office or Other Outpatient Services
	Emergency Department Services
	Special Evaluation and Management Services
	Prolonged Services
	Vaccination Services

## Emergency Department

Cases include services covered in the emergency department section of the CPT code book	New or Established Patient Emergency Department Services
	Critical Care Services
	Electrocardiogram Services

## ENT (Otolaryngology)

Cases include services covered in the respiratory section of the CPT code book	Repair Procedures on the Nose
	Excision Procedures on the Salivary Gland and Ducts
	Endoscopy Procedures on the Trachea, Bronchi, Larynx
	Endoscopy Procedures on the Accessory Sinuses
	Excision and Destruction Procedures on the Pharynx, Adenoids, Tonsils, Tongue, and Floor of the Mouth
	Excision Procedures on the Thyroid Gland
	Evaluation and Management Services

## Gastroenterology

Cases include services covered in the Digestive and Medicine section of the CPT code book	Surgical Procedures on the Intestines (Except Rectum)
	Endoscopy Procedures on the Digestive System
	Laparoscopic Procedures on the Digestive System
	Surgical Procedures on the Abdomen, Peritoneum, and Omentum
	Surgical Procedures on the Biliary Tract

## General Surgery

Cases include services covered in the Surgical section of the CPT code book	Surgical Procedures on the Breast
	Surgical Procedures on the Digestive Tract
	Endoscopic Procedures on the Digestive System
	Surgical Procedures on the Abdomen, Peritoneum, and Omentum
	Surgical Procedures on the Biliary Tract

## OB/Gyn

Cases include services covered in the Female Genital System and Maternity Care & Delivery section of the CPT code book	Surgical Procedures on the Oviduct/Ovary
	Surgical Procedures on the Corpus Uteri
	Surgical Procedures on the Cervix Uteri
	Surgical Procedures for Maternity Care and Delivery
	Evaluation and Management Services

## Orthopedic

Cases include services covered in the Musculoskeletal System and section of the CPT code book	Endoscopy/Arthroscopy Procedures on the Musculoskeletal System
	Surgical Procedures on the Musculoskeletal
	Surgical Procedures on the Spine and Spinal Cord
	Fracture and/or Dislocation Procedures
	Evaluation and Management Services

## Radiology

Cases include services covered in the Musculoskeletal System and section of the CPT code book	Diagnostic Radiology (Diagnostic Imaging) Procedures
	Diagnostic Ultrasound Procedures
	Radiologic Guidance
	Breast, Mammography
	Bone/Joint Studies

## Family Practice

Cases include services covered in the Family Practice specialty	Office or Other Outpatient Services
	Emergency Department Services
	Special Evaluation and Management Services
	Preventive Services
	Vaccination Services
	Minor Office procedures

## Internal Medicine

Cases include services covered in the Internal Medicine specialty	Office or Other Outpatient Services
	Emergency Department Services
	Special Evaluation and Management Services
	Preventive Medicine Services
	Minor Office procedures

## Pediatrics

Cases include services covered in the Pediatric specialty	Office or Other Outpatient Services
	Special Evaluation and Management Services
	Preventive Services
	Vaccination Services
	Pediatric procedures

## Urology

Cases include services covered in the Urology specialty	Office or Other Outpatient Services
	Surgical Procedures on the Kidney
	Surgical Procedures on the Ureter
	Surgical Procedures on the Bladder
	Surgical Procedures on the Urethra





# Employer

# Assessments

# Employer Assessments

For medical coding and billing employers who want an easy way to evaluate prospective employees and assess existing staff, Practicode Employee Assessments uses real-world coding cases providing a variety of different services ranging from office visits to large surgical procedures. Different from any competitors, AAPC Practicode Employee Assessments have gone through quality checks to ensure proper code assignment by seasoned coders specializing in each specialty.

## DETAILS

- Each assessment includes 20 cases
- Complete Practicode anywhere you have a computer with internet access, using browser or mobile app.
- Practicode includes actual charts and medical documentation. Successfully working these cases will give you experience as real as what you get on the job.
- Practicode contains 16 specialty assessments to test a coder's abilities.
- Go beyond coding specialties with the Coding Manager and Auditor Assessments
- Don't see the specialty that you want? Want different scoring parameters and/or timing? Practicode can be customized to suit various needs including allowing customers to add their own content.
- Have all the power you need to manage your users, enroll them quickly into assessments or courses, set deadlines, and build custom reports using the systems robust reporting features that can be automated with just a few clicks.

### Coding Manager

This assessment is designed to assess a candidate's knowledge of coding and billing regulations and application.	Denial and Appeals Process
	Revenue Cycle Management
	Evaluation and Management Services
	Surgical Procedures
	Coding from the Medicine section of the CPT code book

## Auditor

This assessment is designed to assess a candidate's knowledge of coding and billing along with auditing skills.

Denial and Appeals Process
Revenue Cycle Management
Evaluation and Management Services
Surgical Procedures
Provider Communication
Coding Rules and Regulations

## Multispecialty Assessments

- These assessments are designed to test the learners across multiple specialties for an overall test of the learners coding skills.
  - Multispecialty Evaluation and Management
  - Multispecialty Surgical Focused Assessment

